

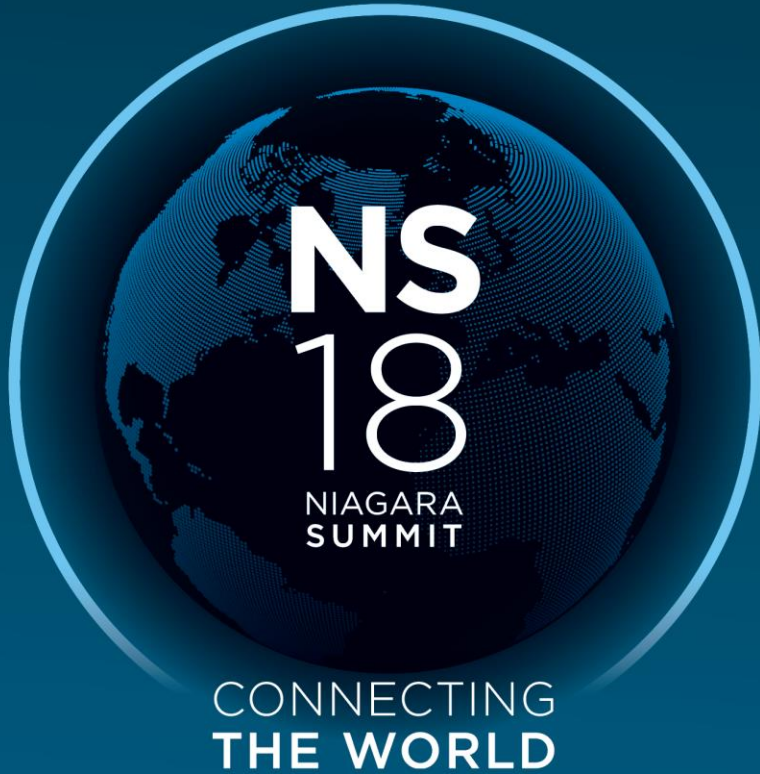


NS

18

**NIAGARA
SUMMIT**

**CONNECTING
THE WORLD**



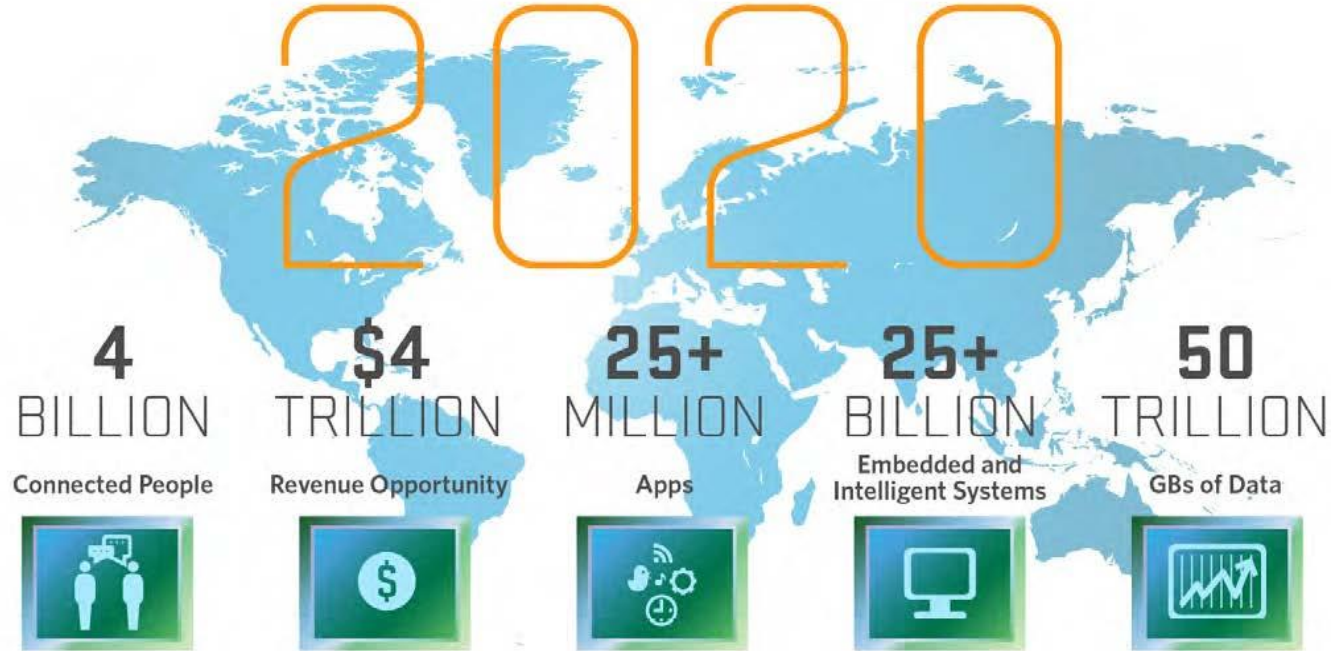
Thinking Outside the Box: Niagara as an innovation platform

Greg Barnes – Activelogix, LLC

Thinking Outside the Box:

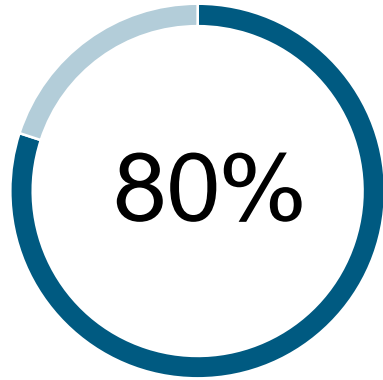
nProtex - Comprehensive security reporting for two-tiered
Niagara IoT Systems

IoT is here... and Niagara is an Enabler!

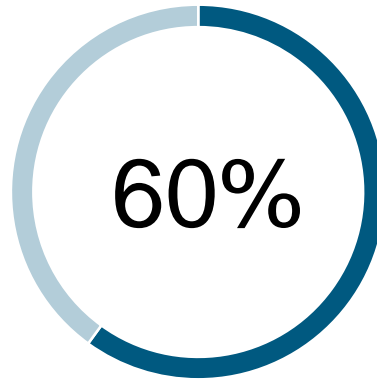


Source: Mario Morales, IDC

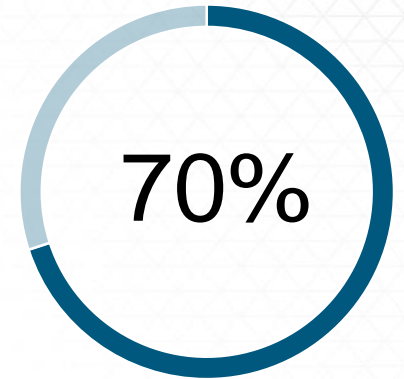
IoT State of the Union



Did not require strong passwords



Were found to have vulnerabilities



Did not use any encryption

**2015 HP study

Notable Hacks

- **Stuxnet**
- **Target Hack**
- **Marai Botnet**
- **Wannacry**

Multiple Components to Securing...

1

Software
Security

2

Hardware
Security

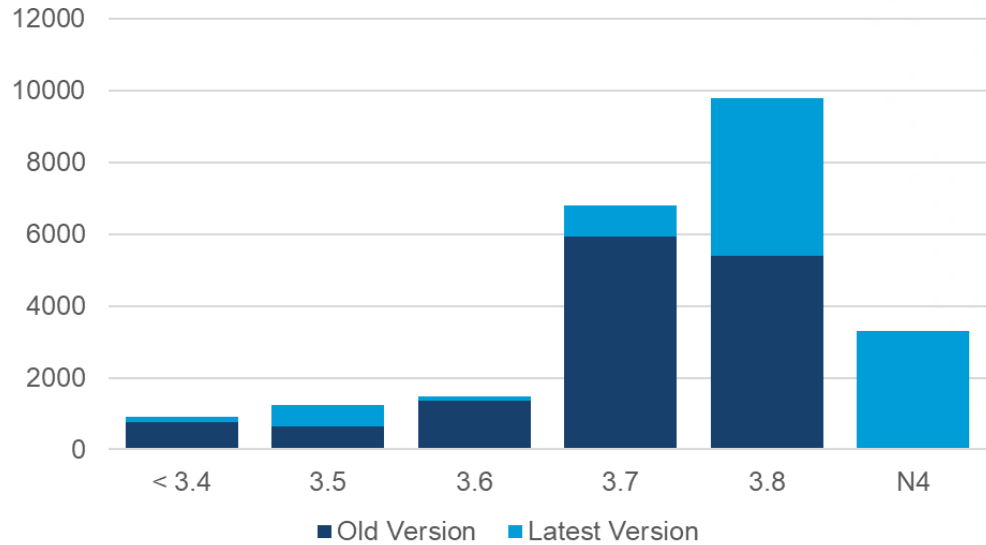
3

Network
Security

4

User
Awareness

Many Users Are Negligent



Only 30-40% of AX users running latest respective builds



nProtex

nProtex is a comprehensive security reporting tool for two-tiered Niagara Networks. It offers scheduled and on-demand reporting of security policy adherence. All generated Reports are saved for future comparison. Reports, past and present, are visualized in a clear and responsive web interface.



nProtex

- **Developed By Activelogix**
- **Improves Focus on Need For Security Diligence**
- **Compatible With Niagara AX 3.6+ and Niagara 4.x**
- **Uses Recommendations Based On The Niagara Hardening Guide(s)**
- **Generates Reports To Review Security Assessment(s)**

Niagara Hardening & Best Practices

Hardening guides for

- AX (34 pages)
- N4 (42 pages)

Includes:

- Passwords
- Accounts and Permissions
- Authentication
- TLS & Certificates
- JACE-8000 Settings

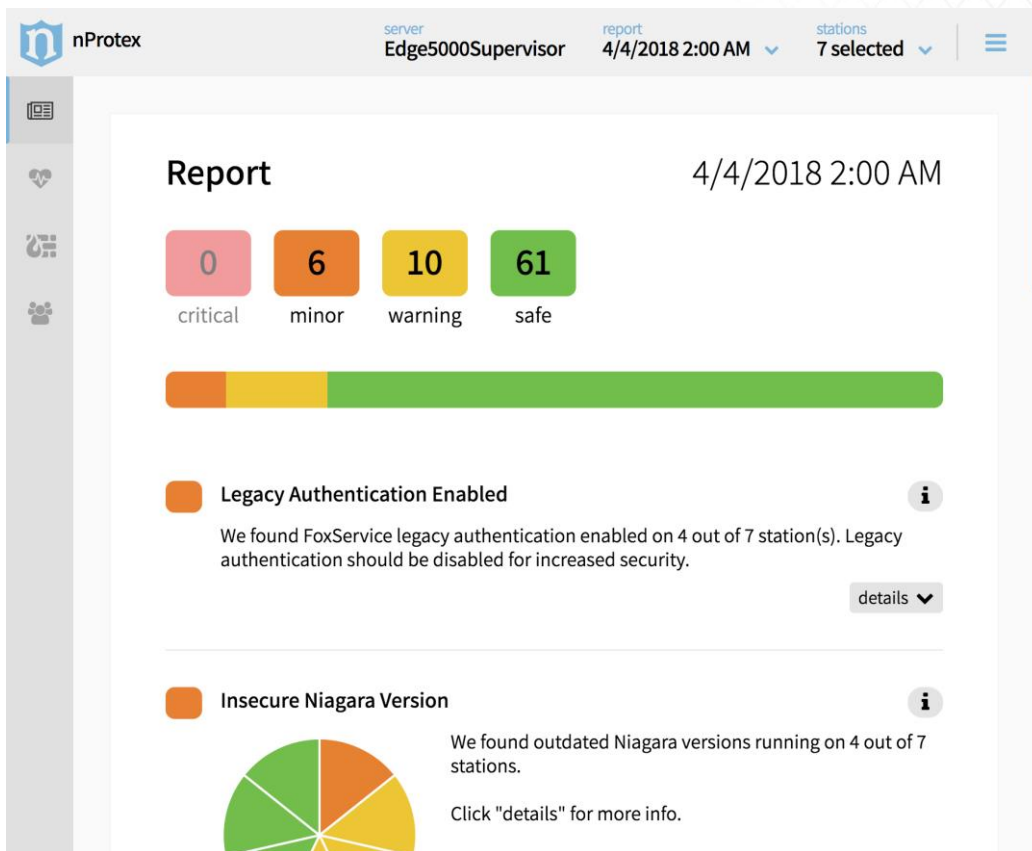


nProtex

Reports Include:

- Password Strength/Expiration
- User Account Lockout
- Outdated Software
- Number of Users/Super Users
- FoxService Authentication
- WebService Authentication
- Configurable Thresholds

Report



nProtex stations 7 selected

Health

Select a station to view live health details.

Edge5000Supervisor 4/4/2018 2:00 AM	
Cpu Usage	0% ●
Heap Usage	55% ●
Mem Usage	16% ●

J334nProtex 4/3/2018 9:07 AM	
Status	ok ●
Cpu Usage	3% ●
Heap Usage	39% ●
Mem Usage	47% ●

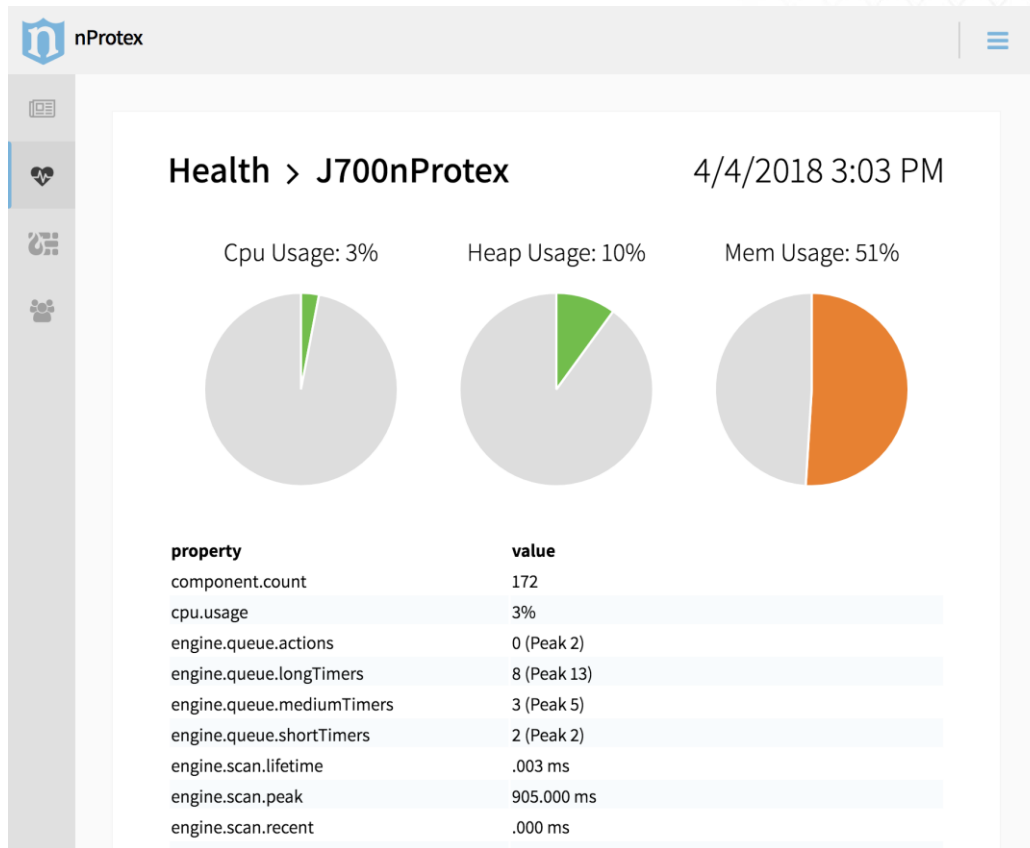
J700nProtex 4/4/2018 2:00 AM	
Status	ok ●
Cpu Usage	3% ●
Heap Usage	9% ●
Mem Usage	51% ●

J8000nProtex 4/4/2018 1:59 AM	
Status	ok ●
Cpu Usage	40% ●
Heap Usage	22% ●
Mem Usage	92% ●

nProtexJ200 4/4/2018 1:59 AM	
Status	ok ●

nProtexJ234 10/2/2017 11:35 AM	
Status	ok ●

Health Detail



Audit

The screenshot displays the nProtex Audit interface. At the top, there is a header bar with the nProtex logo on the left and filters for start date (3/28/2018), end date (4/4/2018), operations (all), and stations (4 selected). A sidebar on the left contains navigation icons for home, health, settings, and users. The main content area is titled 'Audit' and lists four events:

Event	Time
Logout	3:15 PM 3/28/2018
Username: admin IP: 192.168.1.241 Station: J700nProtex	
Login	3:13 PM 3/28/2018
Username: admin IP: 192.168.1.241 Station: J700nProtex	
Logout	3:01 PM 3/28/2018
Username: admin IP: 192.168.1.241 Station: WEBs600nProtex	
Login	3:00 PM 3/28/2018
Username: admin	

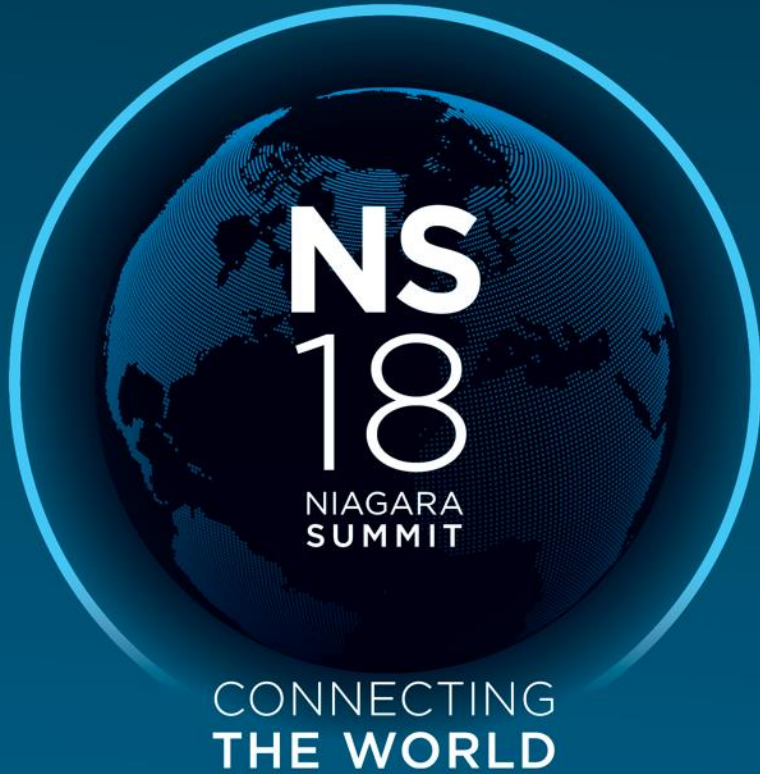
Firewall

The screenshot shows the nProtex Firewall configuration page. The interface includes a top header with the nProtex logo and a hamburger menu icon. A left sidebar contains navigation icons for a dashboard, health status, settings (highlighted), and users. The main content area is titled "Firewall" and contains the following configuration options:

- Enabled:** A checked checkbox.
- Mode:** A dropdown menu currently set to "Whitelist".
- IP Addresses:** A text input field containing "192.168.1.1/20".
- Submit:** A button to save the configuration.

Thank You!

www.ActiveLogix.com
www.nProtex.com



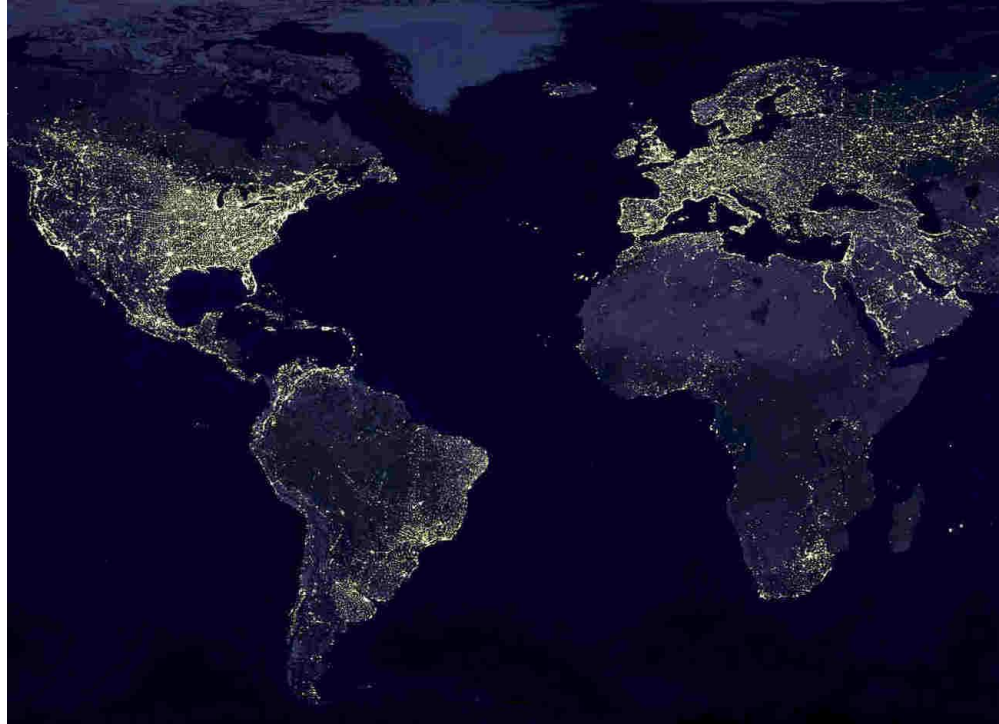
Clever Lighting: Leveraging Niagara for Revenue and IoT

Russ Sharer

VP Marketing, Fulham

rsharer@fulham.com

Lighting is the Perfect IoT Ekoskeleton



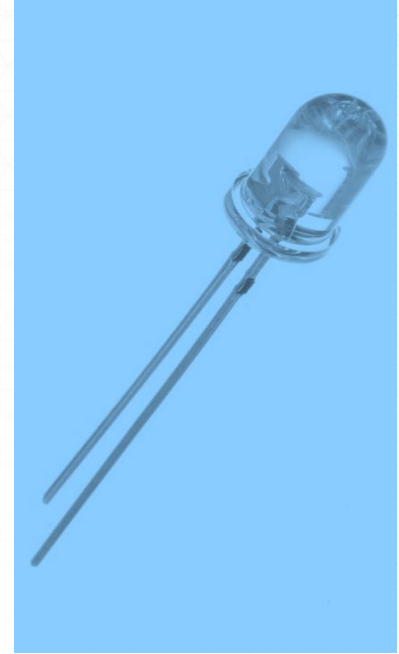
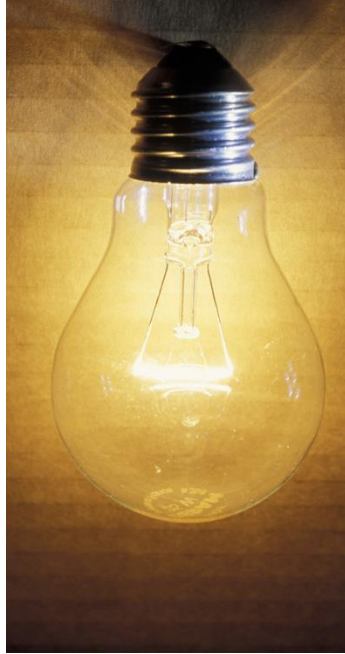
Lighting is the Perfect IoT Ekoskeleton



Lighting is the Perfect IoT Ekoskeleton



Lighting is Evolving



Clever Lighting

- Leveraging the uniqueness of LEDs and digital design for customer-valued, differentiated products
- ~\$1B Global Market
- Smart Endpoints = Sensor Data Points

Clever = Programmable + Intelligent



Smart = Clever + Connected

The New Business Case for Niagara + Clever

elitedali™
smart lighting controls

Software & hardware building blocks, enabling any suitable BMS, BAS, BEMS, or BACS platform based upon Tridium's Niagara FrameWork® to be a smart DALI® lighting commissioning and controls solution.

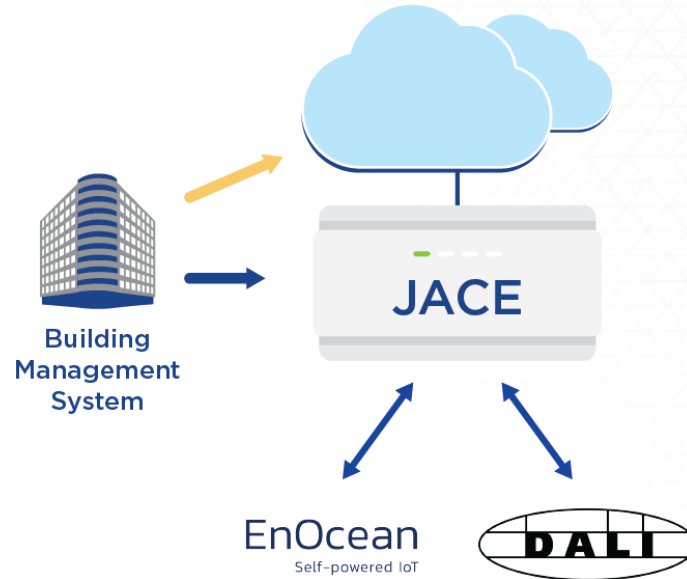
cns-enocean™
wireless | energy harvesting

Software & hardware building blocks, enabling, any suitable BMS, BAS, BEMS, or BACS platform based upon Tridium's Niagara FrameWork® to be a smart EnOcean® wireless commissioning and controls solution.

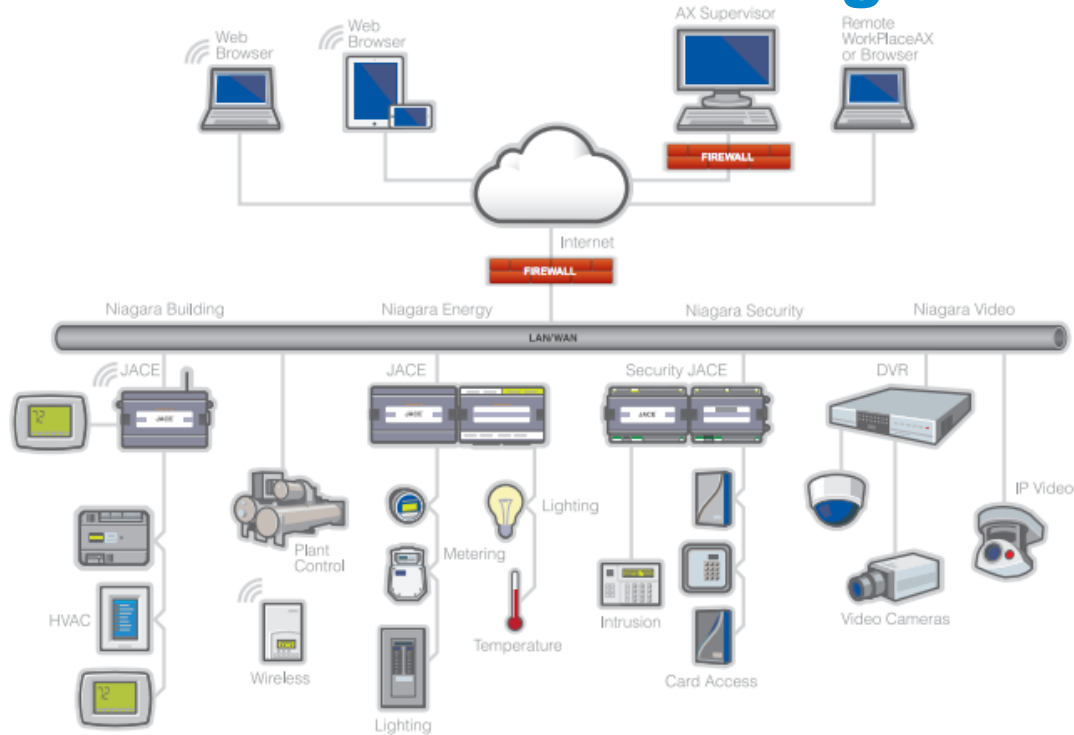
The New Business Case for Niagara + Clever

elitedali™ and cns-enocean™

- Direct & seamless BMS/BAS integration & device value data access
- **Native** Tridium® Niagara product
- Specialized for distribution centers, factories, office space, hospitals, hotels, educational facilities
- Empowers the Niagara Community to add its own significant IP and value.



The New Business Case for Niagara + Clever



The New Business Case for Niagara + Clever





- Why Communicate with Every Fixture?
 - No matter the code changes (Title 24), we can adapt
 - Take full advantage of future software updates
 - Better daylight harvesting
 - Easily adjustable lighting scenes





- What features are important to me today?
 - HVAC optimization
 - Space utilization
 - Classroom scenes
 - Plug loads
 - Proven energy savings reports





California State University
DOMINGUEZ HILLS

Before 100%

After 25%



CASE STUDY



- What do I see in the future?
 - Professor walks into room and lights and HVAC adjust to his or her preselected levels
 - Maintenance walks into the room and they are immediately connected to a database that corresponds to relevant room data
 - Age of carpet, paint, furniture, etc.
 - Last time cleaning was done or floor polishing
 - PMs or work logs
 - CO2 sensors, humidity, water leaks/flooding



- During February 2015, Eco Vox building analytics showed that **15 VAV units using lighting occupancy controls data** averaged 152 hours each with **flow reduced by 161 cfm from normal.**
 - **2.1% reduction** of total airflow through air handlers 2 and 3
 - **Saves 720 kWh**
 - **Reduction of some 80 therms of natural gas**, due to cooling saved at the chiller level

- Welch Hall has a total of 185 VAV units

$$185 / 15 = 12.33$$

$$720\text{kWh} * 12.33 = 8,878 \text{ kWh} * 12 \text{ months} = 106,531 \text{ kWh per year}$$

$$80 \text{ therms} * 12.33 = 986 \text{ therms} * 12 \text{ months} = 11,837 \text{ therms per year}$$

ECOVOX
ENERGY ANALYTICS

Smart Business = Clever + Niagara (Platforms & Products)

- A profitable extension for single service Niagara SIs – Lighting
- Create multiple system control (usually Lighting + HVAC)
 - Better Rol than single service
 - Unique offerings to differentiator your service from competitors
 - Small incremental work for large revenue increase
 - Broaden and enhance your reputation
- Create annuity solutions limited only by imagination and ability to execute!

Thank You

Russ Sharer

Fulham

rsharer@fulham.com



NS

18

**NIAGARA
SUMMIT**

**CONNECTING
THE WORLD**



CONNECTING
THE WORLD

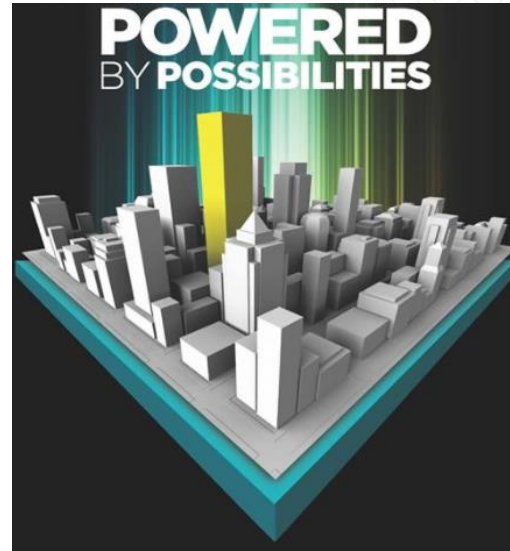
Thinking Outside the Box

Amod Kamat

Manager Software Engineering, Tridium Inc.

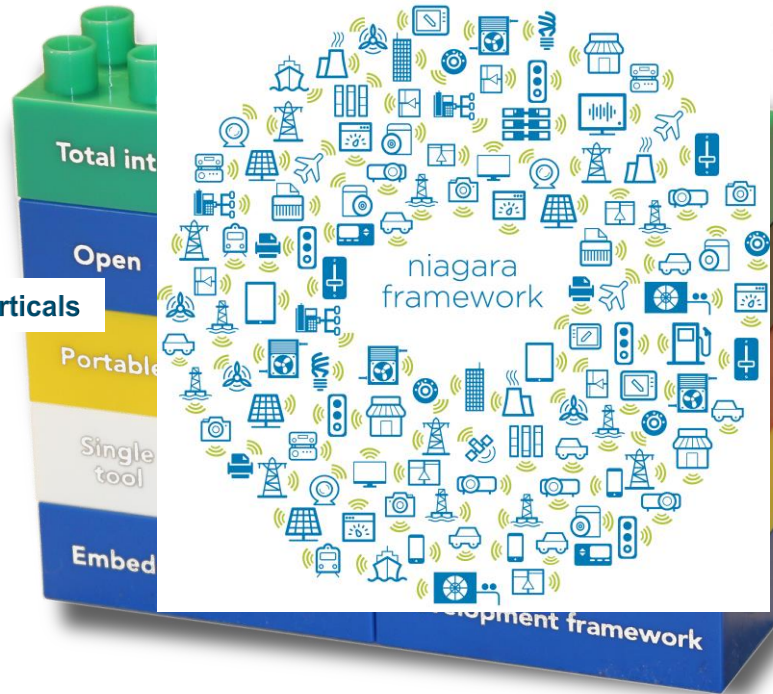
niagara⁴

Continuing to fuel the innovation ecosystem



Niagara Platform – Open 4 Innovation

Spanning to different verticals



Beyond our imagination

Niagara Platform – Open 4 Innovation

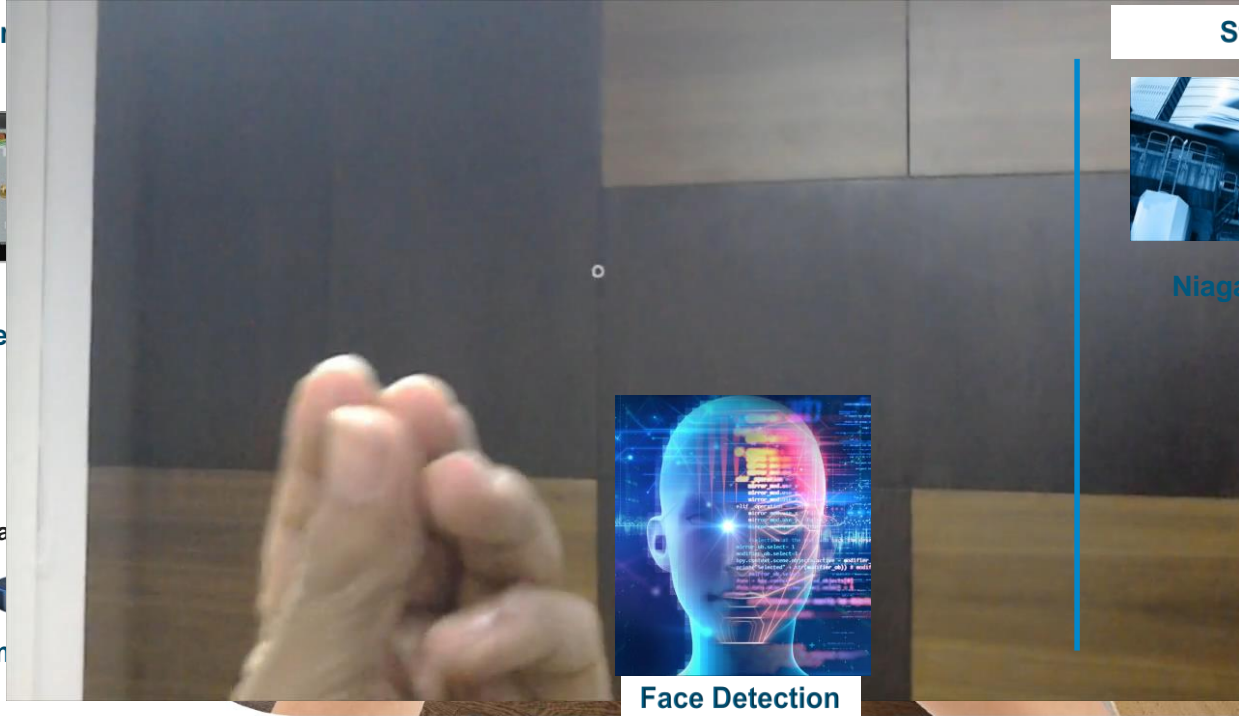
Current

Step Beyond ...

Mobile Inter

Amazon Alexa

Sm



Face Detection



Niagara for locomotives

Thanks to our Community.....

***Questions?**

BACKUP

IHA – Integrated Home Automation



Augmented Reality – with Microsoft HoloLens

niagara⁴

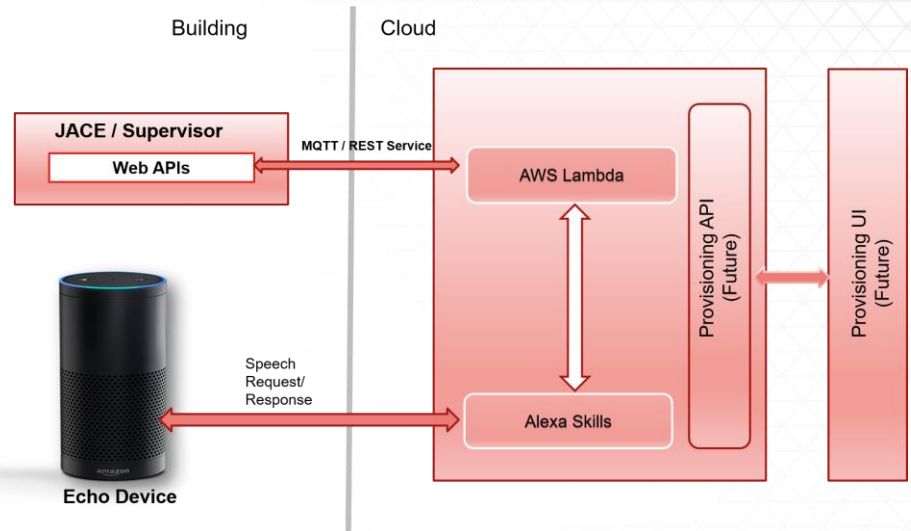
Analytics Framework



Smart Office – “Hello Niagara!”

Most of people spend 30% of their active day at the office!

- Provide seamless experience with voice command and control
- Step towards future workspace



Step Beyond Buildings & Home

Concept to explore use of Niagara on Railways

- Model every train car as a building
- Overcome network availability challenges

